



## RUBBER EXPANSION JOINTS

### SPOOL-TYPE STANDARD ARCH 150, 200, 200XL



- **The heavy duty proven "industry work horse"**
- Time tested performer
- Fabric and steel reinforced
- Constructed for maximum strength and reliability.
- Available in multi-arch, taper, offset and special constrictions

### SUPER-FLEX WIDE ARCH DESIGN 1000, 1100, 1200



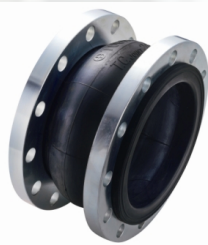
- **Twice the movement capabilities than standard arch**
- Lower spring rates required for movement
- Fabric and steel reinforced
- Suitable for pressures up to 200 PSI and vacuum service
- Available in multi-arch, offset and special constructions

### LIGHTWEIGHT APPLICATION DESIGN - STYLE 189



- Lightweight construction
- Low spring rate forces
- Can be built to handle temperatures up to 350°F
- **Less force to move; allows maximum movements**
- Available in multi-arch, taper, offset and for high temperature applications

### SPHERICAL DESIGN - STYLE 800, 802, 803



- Minimizes water hammer and hydraulic shock
- Less force to move; allows maximum movements
- **"All-in-one" design eliminates the need for retaining rings**
- Available in Twin Sphere design for greater movement capabilities
- Floating flange design provides easy installation

### FLUE DUCT AND NAVY FAN CONNECTORS - STYLE 600



- Designed to absorb thermal movements and sound vibrations
- Liners and insulation can allow temperatures to 500°F
- **Suitable for Flue Duct Applications**
- Available in multiple arch, taper, offset and special constructions
- Custom Drilled or un-drilled

For more information on Rubber Expansion Joints, please refer to our **PRODUCTS** section - **EXPANSION JOINTS**