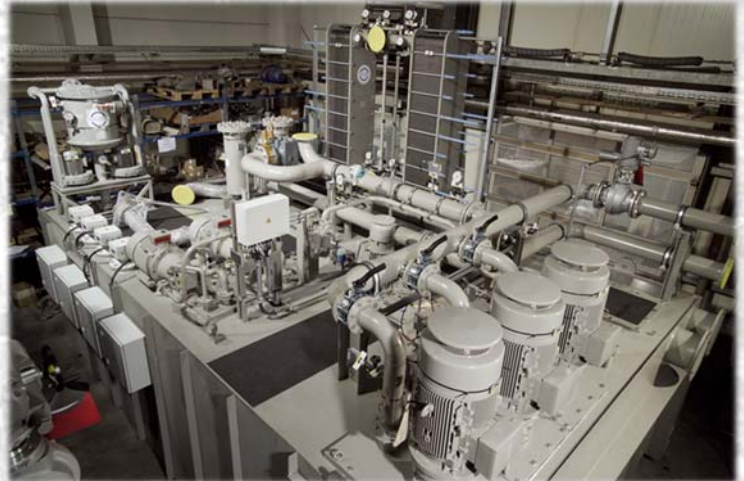


SPIRAL WOUND GASKETS



SPIRAL WOUND GASKETS (ALSO KNOWN AS FLEX GASKETS)

ARE AVAILABLE IN:

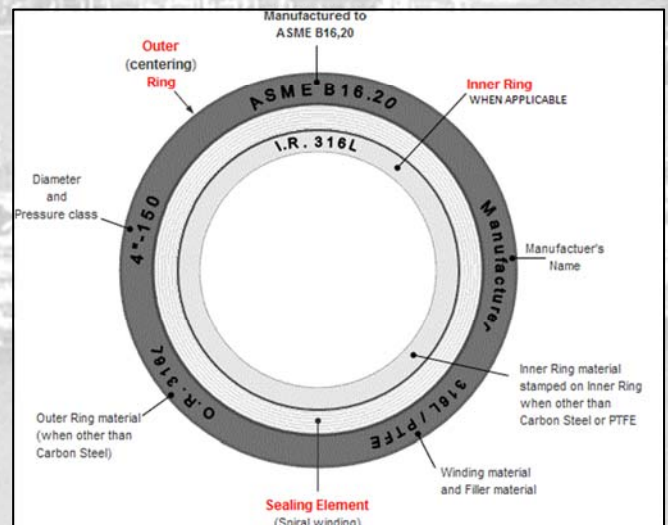
- STANDARD SIZES - IN STOCK
- VARIETY OF METAL WINDING and FILLER MATERIALS
- CUSTOM SIZES AND SHAPES

MANUFACTURED IN ACCORDANCE WITH:

- ASME B16.20

AVAILABLE IN ACCORDANCE WITH MILITARY SPECIFICATIONS:

- MIL-G-24716
- MIL-G-15342



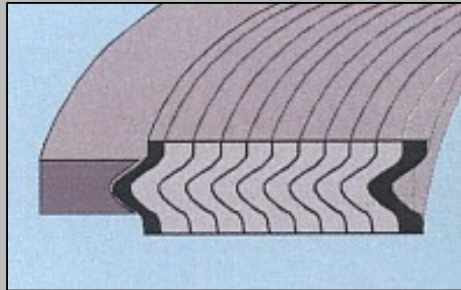
SPIRAL WOUND GASKET METALS & FILLERS

WINDING	NON-METALLIC FILLERS
347SS - 1700°F	GRAPHITE - 950°F
347 SS WINDNGS with GRAPHITE FILLER MEETS MIL-G-24716	
304SS - 1400°F	NON-ASBESTOS - 500°F
316LSS - 1400°F	
321SS - 1500°F	
Monel - 1500°F	PTFE - 500°F
Nickel - 1400°F	
Titanium - 2000°F	THERMICULITE® - 1800°F
Inconel - 600°F - 2000°F	
Hastelloy - 2000°F	CERAMIC - 2300°F

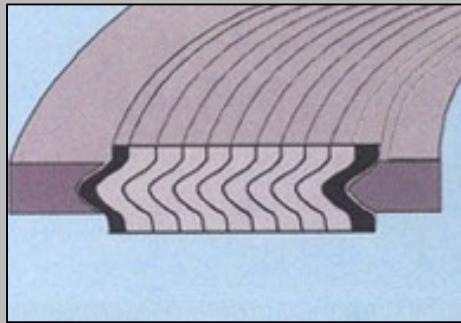


SPIRAL WOUND GASKETS

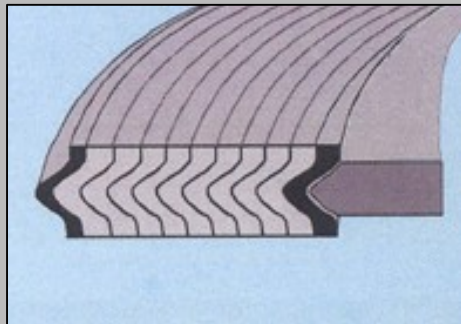
STYLE LG-13: SPIRAL WOUND with OUTER RING



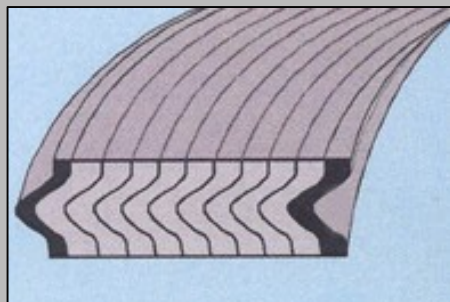
STYLE LG-13-IR: SPIRAL WOUND with INNER and OUTER RING



STYLE LG-11-IR: SPIRAL WOUND with INNER RING



STYLE LG-11: SPIRAL WOUND ONLY



SPIRAL WOUND GASKET with OUTER RING DIMENSIONS 150 to 400 Lbs.

Dimensions Per ASME B16.21							
NOM PIPE SIZE	FILLER O.D.	150 LB		300 LB		400 LB	
		I.D.	O.D.	I.D.	O.D.	I.D.	O.D.
1/4*	7/8	1/2	1-3/4	1/2	1-3/4	1/2	1-3/4
1/2	1-1/4	3/4	1-7/8	3/4	2-1/8	3/4	2-1/8
3/4	1-9/16	1	2-1/4	1	2-5/8	1	2-5/8
1	1-7/8	1-1/4	2-5/8	1-1/4	2-7/8	1-1/4	2-7/8
1-1/4	2-3/8	1-7/8	3	1-7/8	3-1/4	1-7/8	3-1/4
1 ½	2-3/4	2-1/8	3-3/8	2-1/8	3-3/4	2-1/8	3-3/4
2	3-3/8	2-3/4	4-1/8	2-3/4	4-3/8	2-3/4	4-3/8
2 ½	3-7/8	3-1/4	4-7/8	3-1/4	5-1/8	3-1/4	5-1/8
3	4-3/4	4	5-3/8	4	5-7/8	4	5-7/8
3 ½	5-1/4	4-1/2	6-3/8	4-1/2	6-1/2	4-1/2	6-1/2
4	5-7/8	5	6-7/8	5	7-1/8	4-3/4	7
5	7	6-1/8	7-3/4	6-1/8	8-1/2	5-13/16	8-3/8
6	8-1/4	7-3/16	8-3/4	7-3/16	9-7/8	6-7/8	9-3/4
8	10-3/8	9-3/16	11	9-3/16	21-1/8	8-7/8	12
10	12-1/2	11-5/16	13-3/8	11-5/16	14-1/4	10-13/16	14-1/8
12	14-3/4	13-3/8	16-1/8	13-3/8	16-5/8	12-7/8	16-1/2
14	16	14-5/8	17-3/4	14-5/8	19-1/8	14-1/4	19
16	18-1/4	16-5/8	20-1/4	16-5/8	21-1/4	16-1/4	21-1/8
18	20-3/4	18-11/16	21-5/8	18-11/16	23-1/2	18-1/2	23-3/8
20	22-3/4	20-11/12	23-7/8	20-11/16	25-3/4	20-1/2	25-1/2
24	27	24-3/4	28-1/4	24-3/4	30-1/2	24-3/4	30-1/4

SPIRAL WOUND GASKET with OUTER RING DIMENSIONS

600 to 2500 Lbs.

Dimensions Per ASME B16.21									
NOM PIPE SIZE	FILLER O.D.	600 LB		900 LB		1500 LB		2500 LB	
		I.D.	O.D.	I.D.	O.D.	I.D.	O.D.	I.D.	O.D.
1/4*	7/8								
1/2	1-1/4	3/4	2-1/2	3/4	2-1/2	3/4	2-1/2	3/4	2-3/4
3/4	1-9/16	1	2-3/4	1	2-3/4	1	2-3/4	1	2-3/4
1	1-7/8	1-1/4	3-1/8	1-1/4	3-1/8	1-1/4	3-1/8	1-1/4	3-3/8
1-1/4	2-3/8	1-9/16	3-1/2	1-9/16	3-1/2	1-9/16	3-1/2	1-9/16	4-1/8
1 1/2	2-3/4	2-1/8	3-3/4	1-7/8	3-7/8	1-7/8	3-7/8	1-7/8	4-5/8
2	3-3/8	2-3/4	4-3/8	2-5/16	5-5/8	2-5/16	5-5/8	2-5/16	5-3/4
2 1/2	3-7/8	3-1/4	5-1/8	3-1/4	6-1/2	3-1/4	6-1/2	3-1/4	6-5/8
3	4-3/4	4	5-7/8	3-3/4	6-5/8	3-5/8	6-7/8	3-5/8	7-3/4
3 1/2	5-1/4	4-1/2	6-1/2	4-1/8	7-1/2	4-1/8	7-3/8		
4	5-7/8	4-3/4	7-5/8	4-3/4	8-1/8	4-5/8	8-1/4	4-5/8	9-1/4
5	7	5-13/16	9-1/2	5-13/16	9-3/4	5-5/8	10	5-5/8	11
6	8-1/4	6-7/8	10-1/2	6-7/8	11-3/5	6-3/4	11-1/8	6-3/4	12-1/2
8	10-3/8	8-7/8	12-5/8	8-7/8	14-1/8	8-1/2	13-7/8	8-1/2	15-1/4
10	12-1/2	10-13/16	15-3/4	10-13/16	17-1/8	10-5/8	17-1/8	10-5/8	18-3/4
12	14-3/4	12-7/8	18	12-7/8	19-5/8	12-3/4	20-1/2	12-3/4	21-5/8
14	16	14-1/4	19-3/8	14-1/4	20-1/2	14-1/4	22-3/4		
16	18-1/4	16-1/4	22-1/4	16-1/4	22-5/8	16-1/4	25-1/4		
18	20-3/4	18-1/2	24-1/8	18-1/4	25-1/8	18-1/4	27-3/4		
20	22-3/4	20-1/2	26-7/8	20-1/4	27-1/2	20-1/4	29-3/4		
24	27	24-3/4	31-1/8	24-1/4	33	24-1/4	35-1/2		

SPIRAL WOUND GASKETS (FLEX GASKET) PART NUMBERS for 347SS WINDINGS / GRAPHITE FILLER / CARBON STEEL OUTER RING

Size	150#	300#	400#	600#	900#	1500#	2500#
1/4"	347FX250150	347FX250300	347FX250400	347FX250600	347FX250900	347FX2501500	347FX2502500
1/2"	347FX500150	347FX500300	347FX500400	347FX500600	347FX500900	347FX5001500	347FX5002500
3/4"	347FX750150	347FX750300	347FX750400	347FX750600	347FX750900	347FX7501500	347FX7502500
1"	347FX10150	347FX10300	347FX10400	347FX10600	347FX10900	347FX101500	347FX102500
1 1/4"	347FX125150	347FX125300	347FX125400	347FX125600	347FX125900	347FX1251500	347FX1252500
1 1/2"	347FX150150	347FX150300	347FX150400	347FX150600	347FX150900	347FX1501500	347FX1502500
2"	347FX20150	347FX20300	347FX20400	347FX20600	347FX20900	347FX201500	347FX202500
2 1/2"	347FX250150	347FX250300	347FX250400	347FX250600	347FX250900	347FX2501500	347FX2502500
3"	347FX30150	347FX30300	347FX30400	347FX30600	347FX30900	347FX301500	347FX302500
3 1/2"	347FX350150	347FX350300	347FX350400	347FX350600	347FX350900	347FX3501500	347FX3502500
4"	347FX40150	347FX40300	347FX40400	347FX40600	347FX40900	347FX401500	347FX402500
5"	347FX50150	347FX50300	347FX50400	347FX50600	347FX 50900	347FX501500	347FX502500
6"	347FX60150	347FX60300	347FX60400	347FX60600	347FX60900	347FX601500	347FX602500
8"	347FX80150	347FX80300	347FX80400	347FX 80600	347FX80900	347FX801500	347FX802500
10"	347FX100150	347FX100300	347FX100400	347FX100600	347FX100900	347FX1001500	347FX1002500
12"	347FX120150	347FX120300	347FX120400	347FX120600	347FX120900	347FX1201500	347FX1202500
14"	347FX140150	347FX140300	347FX140400	347FX140600	347FX140900	347FX1401500	
16"	347FX160150	347FX160300	347FX160400	347FX160600	347FX160900	347FX1601500	
18"	347FX180150	347FX180300	347FX180400	347FX180600	347FX180900	347FX1801500	
20"	347FX200150	347FX200300	347FX200400	347FX200600	347FX200900	347FX2001500	
24"	347FX240150	347FX240300	347FX240400	347FX240600	347FX240900	347FX2401500	

