



**SAN DIEGO SEAL, INC.**

**INDUSTRIAL & MARINE SEALING DEVICES**

7635 RONSON ROAD • SAN DIEGO, CA 92111 • TEL: 858-278-3270 • FAX: 858-278-2950  
E-MAIL: sales@sandiegoseal.com • VISIT US AT: www.sandiegoseal.com

## *Injectable Packing*

### *Pump & Valve Sealant*



#### **367IP**

Black High Temperature sealant, blended with flexible graphite. For use in hostile environments, high temperature pumps and valves

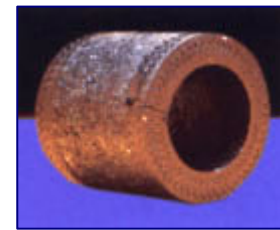
Temp.: **1200°F**  
pH: **0-14**  
Speed: **4000 fpm**  
Pressure: **250 psi**  
(rotary/centrifugal)



#### **354IP**

White PTFE sealant, non-staining, non-contaminating meets FDA standards for food contact and potable water applications.

Temp.: **500°F**  
pH: **0-14**  
Speed: **1500 fpm,**  
Pressure: **300 psi**  
(rotary/centrifugal).



#### **365IP**

Black PTFE high performance sealant containing GFO™, for use in high speed applications

Temp.: **500°F**  
pH: **0-14**  
Speed: **4300 fpm**  
Pressure: **300psi**  
(rotary/centrifugal)

Other types of sealants are available upon request.

#### ***Unique Properties***

- Combines the latest chemistry and fiber technology
- A malleable, putty consistency makes installation easy
- Conforming to any shape it will seal even worn shafts
- Low coefficient of friction results in lower operating temperatures
- Self-lubricating; needs no flush or cooling water
- Long lasting, will not dry out or harden
- Packaged in durable, compact, easy to use and store containers

#### ***Major Benefits***

- Prevents leakage
- Lowers operating costs
- Reduces maintenance time and costs
- Saves energy
- Reduces shaft and sleeve wear
- Extends Equipment life
- Reduces or eliminates downtime

## ***INSTALLATION OF INJECTABLE SEALANTS***



### ***An Easy and Convenient Product to Use***

#### **Injectable sealants are easy to install.**

***The initial installation of packing materials is done by hand. Tightening the gland nut compresses the material and forces it to conform to any irregular spaces caused by wear. An anti-extrusion ring composed of suitably sized braided packing material is set at the top and bottom of the stuffing box or packing gland to prevent the sealant from being forced out when pressure is applied.***



#### ***The injection gun***

- The injection gun utilizes a button-head or flow-through fitting permanently installed on the pump or valve stuffing box.
- Since it requires no electricity, the injection gun can be used anywhere to replenish sealant easily and conveniently. The all-steel hydraulic gun is completely portable and is very easy to use.
- The valve or pump stuffing box fitting allows the sealant to be hand-injected into the shaft stuffing box using the injector gun. No downtime is required for the repacking operation since the equipment can continue to run during the repacking operation.

#### ***How to use the injection gun***

- To properly replenish the packing material, the stuffing box fitting must be located. Next, the injection gun is coupled to the fitting.
- When the gun is properly coupled to the fitting, the on-off handle on the fitting is turned to the open position and the new sealant is pumped into the fitting until the required amount of sealant is injected.
- When the operation is complete, the fitting handle is placed in the off position and the gun is disconnected from the stuffing box fitting. Remember to properly disassemble and return your injection gun to its container where it may be stored until needed again.
- Note: Button-head fittings with check ball valve do not require ball valve for on-line repacking.



### ***SAN DIEGO SEAL, INC.***

7635 RONSON ROAD • SAN DIEGO, CALIFORNIA 92111

TEL: 858-278-3270 • FAX: 858-278-2950

E-MAIL: [sales@sandiegoseal.com](mailto:sales@sandiegoseal.com) • VISIT US AT: [www.sandiegoseal.com](http://www.sandiegoseal.com)