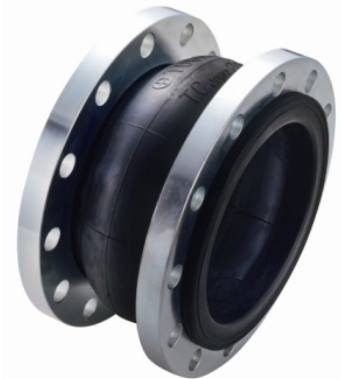


## SPHERICAL DESIGN-800, 802, 803

The **UNASPHERE** is precision molded of neoprene and nylon. It requires less force to move than conventional expansion joints allowing maximum deflection, elongation and compression. The **UNASPHERE** will minimize water hammer or hydraulic shock in any system. #150 ASA drilled flanges.



### UNASPHERE Style 800

The **UNASPHERE** design is inherently stronger than other configurations because of its spherical shape. Pressure exerts itself evenly in all directions and so distributes the forces evenly over a large area. The streamlined, flowing arch reduces turbulence and allows smooth, quiet flow. Sediment cannot build up, therefore, there is no need to fill the arch and thus restrict its movements. All joints rated for 26" HG vacuum and 225 PSI WP except 14" which is rated for 115 PSI.

UNASPHERE Style 800 Size, Movement, Pressure, Weight and Drilling Chart								
Size (in.)	Face-to-Face (in.)	Flange Thickness (in.)	No. of Holes	Thread Size	Allowable Movement			
					Lateral Deflect (in.)	Elongation (in.)	Compression (in.)	Angular Movement (Degrees)
2	6	5/8	4	5/8-11NC	±1/2	3/8	1/2	15
2-1/2	6	11/16	4	5/8-11NC	±1/2	3/8	1/2	15
3	6	11/16	4	5/8-11NC	±1/2	3/8	1/2	15
4	6	11/16	8	5/8-11NC	±1/2	3/8	5/8	15
5	6	13/16	8	3/4-10NC	±1/2	3/8	5/8	15
6	6	7/8	8	3/4-10NC	±1/2	3/8	5/8	15
8	6	7/8	8	3/4-10NC	±1/2	3/8	5/8	15
10	8	15/16	12	7/8-9NC	±3/4	1/2	3/4	15
12	8	15/16	12	7/8-9NC	±3/4	1/2	3/4	15

## "TWIN-SPHERE" Style 802

The **TWIN-SPHERE** is precision molded of neoprene and nylon tire cord. The double arch design allows for greater movement four different ways and provides a non-turbulent flow. Angular movement up to 30° is obtainable with it's highly flexible design. Rated for 225 PSI WP at 170°F. Pressure is reduced at higher temperatures. Vacuum rating to 26" HG.



Size (in.)	Face-to-Face (in.)	Compression (in.)	Elongation (in.)	Lateral Movement (in.)	Angular Movement (Degrees)
2	7	.9	.28	.79	30
2-1/2	7	.9	.28	.79	30
3	7	.9	.28	.79	30
4	9	1.32	.45	.98	30
5	9	1.32	.45	.98	30
6	9	1.32	.45	.98	30
8	13	1.78	.58	1.18	30
10	13	1.78	.58	1.18	30
12	13	1.78	.58	1.18	30

## "TWIN-SPHERE" Style 803

This highly capable, low-cost expansion joint is available for smaller diameter piping systems found in power plants, chemical plants, waterworks, sewerage, residences, etc.



The **TWIN-SPHERE** provides excellent vibration absorption and stress relief in light, compact construction.

- Size: 1/2" thru 3"
- Compression: 3/4"
- Extension: 1/4"
- Lateral: 3/4"
- Angular: 45°
- Temperature: 250°
- Operating Pressure: 150 psi
- Vacuum rating: 15" HG
- Diameters available in 3/4", 1", 1-1/4", 1-1/2" and 2"