

THERMICULITE. 815

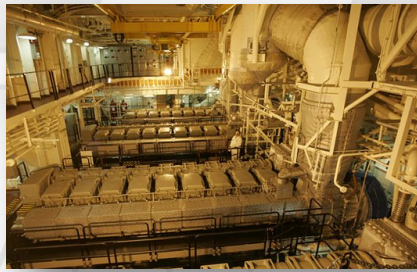
CRITICAL SERVICE SERIES



- Premium Grade, Critical Service Sheet
- Original grade of Thermiculite
- On 316ss tanged core
- Niche market, problem solving material for extreme high temperature applications up to 1800°F
- Successfully passed API 607 and Exxon fire tests
- Available in 1m x 1m and 1.5m x 1.5m
- Thicknesses 1/32, 1/16, 1/8
- Proven Track Record Since 1998
- Winner of Chem Processing magazine Vaaler Award



OIL / GAS



GAS TURBINE / DIESEL EXHAUST



POWER

SERVICE LIMITS

Type	Description	Value		
Temp. Limits:	Maximum	1800°F (982°C)		
Pressure Limits:		2900 psi (200 bar)		
Thicknesses		1/32	1/16	1/8
Typical Properties:	Compressibility	33%	44%	44%
	Facing Density lb/ft ³	75	75	75
	Recovery	13%	9%	9%
	Gas Permeability mL/min	.06	.13	.17
	Stress Retention @570°F	4930	4500	2470
	Creep Relaxation - 1/32"	23.5%		
PART NUMBER / SHEET SIZE				
SDS-03244-815 / 1/32" X 39.4" X 39.4"		SDS-03255-815 / 1/32" X 60" X 60"		
SDS-06244-815 / 1/16" X 39.4" X 39.4"		SDS-06255-815 / 1/16" X 60" X 60"		
SDS-12544-815 / 1/8" X 39.4" X 39.4"		SDS-12555-815 / 1/8" X 60" X 60"		
SDS-25044-815 / 1/4" X 39.4" X 39.4"		SDS-25055-815 / 1/4" X 60" X 60"		

NAVY DRILL, COMMERCIAL DRILL AND CUSTOM PRE-CUT GASKETS ARE AVAILABLE